

SAMPLE PAPER

Class : VI

Time allowed : 2 hours

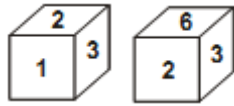
Maximum Marks : 240

GENERAL INSTRUCTIONS

1. The question paper consists of '60' objective type questions. Each question carry 4 marks and all of them are compulsory.
 2. Each question contains four alternatives out of which only **ONE** is correct.
 3. There is **NEGATIVE** marking. **1 mark** will be deducted for each wrong answer.
-

- Q.1 A parking lot can hold 75 cars at a time, $\frac{2}{5}$ of the parking lot is full at a particular time. How many more cars can be kept in the parking lot at that time ?
(A) 30 (B) 45 (C) 35 (D) 15
- Q.2 A man bought 360 eggs at Rs. 18 per dozen, 40 eggs were broken and 20 eggs were rotten. What would be his profit or loss, if he sells at Rs. 20 per dozen ?
(A) His profit of Rs. 40 (B) His profit of Rs. 80
(C) His loss of Rs. 40 (D) His loss of Rs. 80
- Q.3 Fill in the blanks with the correct number in Roman notation,
LXXXVIII + = XCIX
(A) IXI (B) XX (C) XI (D) IIX
- Q.4 Study the pattern in the following sum and find a rule
 $1 + 3 + 5 + 7 + 9 = 5 \times 5$
 $3 + 5 + 7 + 9 + 11 = 5 \times 7$
 $5 + 7 + 9 + 11 + 13 = 5 \times 9$
Use it to fill in the blanks
 $15 + 17 + 19 + 21 + 23 = \dots\dots\dots$
(A) 19×5 (B) 17×5 (C) 21×5 (D) 15×5
- Q.5 Find the LCM of 5, $(20 - 5)$, (15×3) , $(105 + 20)$ and $(200 + 25)$
(A) 1125 (B) 1111 (C) 770 (D) 1025
- Q.6 Raspberries cost more than Blueberries.
Blueberries cost more than Strawberries.
Raspberries cost more than both Strawberries and Blueberries.
If the first two statements are true, the third statement is _____
(A) True (B) False (C) Uncertain (D) None of these

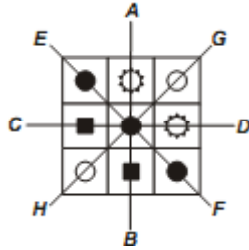
Q.7 Which digit will appear on the face opposite to the face with number 1 ?



- (A) 3 (B) 5 (C) 6 (D) 1

Q.8 If "ICECREAM" is coded as "CICEERMA" then "CHOCOLATES" will be coded as
 (A) OHCLOCETAS (B) HCCOLOTASE (C) COHOCALTES (D) OCOHCTLASE

Q.9 Which line in the diagram below is the correct line of symmetry ?



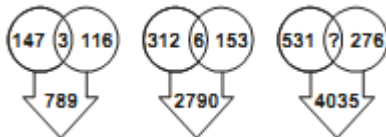
- (A) AB (B) CD (C) EF (D) GH

Q.10 What number am I ?

- I am a two-digit even number.
- I am a common multiple of 6 and 7.
- I have a total of 12 factors.

- (A) 35 (B) 42 (C) 36 (D) 84

Q.11 Which one will replace the question mark ?



- (A) 18 (B) 5 (C) 9 (D) 6

Q.12 We can remove soluble impurities by

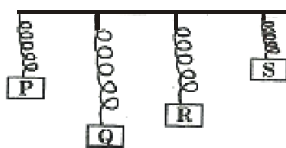
- (A) Sedimentation (B) Decantation (C) Distillation (D) Filtration

Q.13 If your diet is deficient in sour fruits then you are supposed to suffer from

- (A) Rickets (B) Beri Beri (C) Scurvy (D) Night blindness

Q.14 Observe the figure given below.

Four blocks (P, Q, R, S) are suspended to the identical springs.

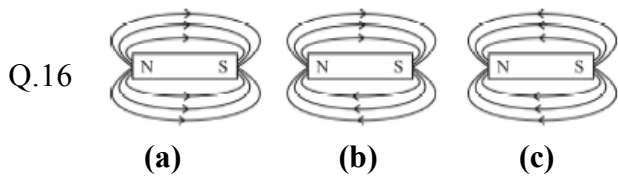


Which of the following blocks is the heaviest ?

- (A) P (B) R (C) S (D) Q

Q.15 Which one of the following clothing material or fabric is not obtained either from plants or from animals?

- (A) Flax (B) Cotton (C) Polyester (D) Jute



Which option shows correct direction of magnetic lines in a bar magnet?

- (A) a (B) b (C) c (D) All of these

Q.17 Some animal hibernate to adapt for :

- (A) escaping cold weather (B) passes scanty urine
(C) escaping from enemies (D) preventing loss of water from the body

Q.18 What are structural and functional unit of life ?

- (A) muscles (B) bones (C) tissues (D) cells

Q.19 In plant cells a cell wall is :

- (A) always present (B) always absent
(C) present in trees only (D) present in small plants only

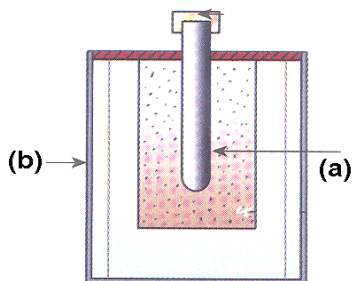
Q.20 The speed of the body when it travels 250cm in 10 sec. will be -----

- (A) 0.25m/s (B) 2.5m/s (C) 0.025m/s (D) 25m/s

Q.21 Conduction cannot take place in -

- (A) Copper (B) Iron (C) Aluminium (D) Vacuum

Q.22 In the given figure (a) and (b) represents



- (A) zinc rod , carbon can
(B) carbon rod , zinc can
(C) graphite , ammonium chloride
(D) ammonium chloride, graphite

Q.23 The motion of a pendulum is

- (A) periodic (B) circular (C) curvilinear (D) rotational

Q.24 What time was 2 hours 40 minutes before 7 : 10 a.m.

- (A) 4 :20 a.m. (B) 4 :30 a.m. (C) 5 : 10 a.m. (D) 6 : 40 a.m.

Q.25 A milkman has 20 litre milk in a container . He sold 3.250 L milk to Rita and 7.850 L to Annie . How much milk does he have now ?

- (A) 11.1000 L (B) 8.900L (C) 8.100L (D) 4.688L

- Q.26 A hall measures 16m by 12m .How many square tiles of side 4m will be required to pave its floor ?
 (A) 10 (B) 11 (C) 12 (D) 13
- Q.27 A man bought 536 chairs .The price of a chair was Rs.398 . He paid Rs.150000 to shopkeeper . How much more has he to pay ?
 (A) Rs.69282 (B) Rs. 63994 (C) Rs. 63382 (D) Rs.63328
- Q.28 The algebraic expression for “ 3 times x added to 2 times y “ is:
 (A) $(3 + x) + (2 + y)$ (B) $3x + 2 + y$ (C) $3x + 2y$ (D) $3y + 2x$
- Q.29 The next two terms in the given pattern are :
 627509 , 627304 , 627099 ,
 (A) 626894 , 626699 (B) 626894 , 626689 (C) 626884 , 626689 (D) 626894 , 626699
- Q.30 Three bells ring at intervals of 15 , 20 ,30 minutes . If they all ring at 11 a.m. together , at what time will they next ring together ?
 (A) 12 noon (B) 12 : 30 p.m. (C) 11 : 30 a.m. (D) 1 : 00 p.m.
- Q.31 Water is called the universal solvent because
 (A) It dissolves in most of the liquids (B) It can dissolve most of the substances
 (C) It contains many salts and minerals (D) It can exist in three states
- Q.32 Alcohol dissolve in water. They are called -
 (A) immiscible liquids (B) Solute and solvent
 (C) solvent and solution (D) miscible liquids
- Q.33 Example of junk food:
 (A) pizza (B) pulses (C) fruits (D) vegetables
- Q.34 Seeds germinate to baby plant when there is:
 (A) Warmth (B) Rain (C) Both (A) & (B) (D) Freeze
- Q.35 This bird makes its nest with leaves:
 (A) tailor bird (B) woodpecker (C) eagle (D) Sparrow
- Q.36 A grain godown had 9,569 bags of wheat. 2,564 bags were taken out on Monday and 6,696 bags were taken out on Tuesday. How many bags are left in the godown ?
 (A) 300 (B) 309 (C) 399 (D) 329
- Q.37 $103 (81 + 59) = (103 ?) + (103 59)$
 Which number will come at the place of?
 (A) 81 (B) 138 (C) 59 (D) 103
- Q.38 What is the place value of the digit 5 in 35,43,608 ?
 (A) 5000 (B) 50000 (C) 500000 (D) 5000000

Q.39 Find the next figure.

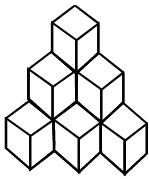


- (A) (B) (C) (D)

Directions : (40) Find the mirror image.

- Q.40 4 7
 (A) 7 4 (B) 7 4̂ (C) 7 4̇ (D) 7 4̈

Q.41 How many cubes are there in the following figure?



- (A) 6 (B) 10 (C) 12 (D) 8

Q.42 Ritu wrote the rule below to describe a number pattern.
 add 2, subtract 1, add 2, subtract 1. Which pattern was made using Ritus rule starting with the number 20 ?

- (A) 20, 22, 24, 26, 28 (B) 20, 21, 19, 20, 18
 (C) 20, 22, 21, 23, 22 (D) 20, 19, 18, 17, 16

Q.43 What is the value of D if $Q + Q + Q = D$

$$Q + Q = 12$$

- (A) 18 (B) 60 (C) 17 (D) 15

Q.44 In the following questions letters take the place of numbers . Complete the sum and identify the letter that gives the answer.

If $P = 9$, $Q = 81$, $R = 27$, $S = 3$ and $T = 18$
 then $R \div S \times P = ?$

- (A) S (B) Q (C) T (D) R

Q.45 Subtracting 40% of a number from the number, we get the result as 30, then find the number.

- (A) 28 (B) 50 (C) 52 (D) 70

Q.46 Desending order of fraction $\frac{1}{5}, \frac{3}{7}, \frac{7}{10}, \frac{13}{28}$ is:

- (A) $\frac{13}{28} > \frac{7}{10} > \frac{3}{7} > \frac{1}{5}$ (B) $\frac{13}{8} < \frac{7}{10} < \frac{3}{7} < \frac{1}{5}$
 (C) $\frac{7}{10} > \frac{13}{28} > \frac{3}{7} > \frac{1}{5}$ (D) None of these

- Q.47 A car runs 16 km using 1 litre of petrol. How much distance will it cover using $2\frac{3}{4}$ litres of petrol?
 (A) 33 km (B) 42 km (C) 44 km (D) None of these
- Q.48 From one corner of a square of side 8 cm, a small square of side 1 cm is cut off. What is the perimeter of the remaining figure?
 (A) 28 cm (B) 30 cm (C) 32 cm (D) 34 cm
- Direction (49) : Find the missing term in the given series.
- Q.49 W, V, T, S, Q, P, N, M, ?, ?
 (A) I, J (B) J, I (C) J, K (D) K, J
- Q.50 In the following question, find which one word can be made from the letters of the given word.
QUINTESENCE
 (A) SCOT (B) QUOTE (C) QUITE (D) ESTEEM
- Q.51 How many A are in the given letter series which does not has B just before it but has C just after it?
 DACBACDACBCACBACBADC
 (A) 3 (B) 4 (C) 5 (D) 6
- Q.52 The atmospheric pressure on our body is
 (A) 10^2 NM^{-2} (B) 10^3 NM^{-2} (C) 10^5 NM^{-2} (D) 10^4 NM^{-2}
- Q.53 Concave lenses is _____.
 (A) diverging (B) converging (C) dispersing (D) reflecting
- Q.54 Rate of flow of charge is known as :
 (A) electric resistance (B) electric potential (C) electric current (D) magnetism
- Q.55 C.G.S. unit of acceleration is :
 (A) ms^{-2} (B) cm s^{-2} (C) ms^2 (D) cm s^2
- Q.56 Which of the following substances is used in barometers ?
 (A) Potassium (B) Cadmium
 (C) Mercury (D) None of these
- Q.57 Which of the following will dissolve in water ?
 (A) Sand (B) Chalk powder (C) Sugar (D) Oil
- Q.58 The process of getting rid of waste materials by living organisms is called
 (A) respiration. (B) digestion. (C) reproduction. (D) excretion.
- Q.59 The part of the plant through which exchange of gases takes place is-
 (A) Stem. (B) Flower. (C) Leaf. (D) Root.
- Q.60 The specific features which enable a plant or animal to live in a particular habitat are called
 (A) Hydrations. (B) Adaptations. (C) Habitats. (D) Transpiration